



FLOATING CRANE

TRONDS LIFT 6

CLASS DNV-GL, 1A1 CRANE VESSEL BARGE

SIGNAL LHNE

GRT 2372

NRT 711

LIFT. CAP. 400 T

TRONDS LIFT 6

Dimensions *

Length o.a.	61,00 m
Beam o.a.	26,30 m
Draught	6,02 m
Air Draft Transit	Approx. 25 m
GRT	2372
NRT	711

Machinery and Equipment *

Main Engines	2 × Volvo D16 650 HE
Auxiliaries	1 × Cummins KTA19 1 × NTA 855
Propulsion	2 × Aquamaster UL400/4000

Capacities *

Max. load aux. boom	40 t
Max. load short boom	400 t
Max. load long boom	200 t
Max. lifting height short boom	42,10 m (from WL)
Max. lifting height long boom	72,45 m (from WL)

Deck *

Available deck area	About 26 × 26 m with capacity of about 1000 mT
Clyde Winch Capacity	450 t at single line pull 900 t at double line pull

Contact details Project and Chartering

Asbjørn Sivertsen

Manager – Contract, Project and Chartering

Phone: +47 906 23 472

E-mail: asbjorn@trondsmarine.com

Aage Petter Fjelland

Manager – Project and Chartering

Phone: +47 928 06 120

E-mail: aage.petter@trondsmarine.com

Steinar Eide

Manager – Project and Chartering

Phone: +47 971 29 666

E-mail: steinar@trondsmarine.com

* These specifications are given without guarantee and may be subject to change without notice.

TRONDS MARINE SERVICE AS TRONDS LIFT 6.

LOAD CAPACITY WHEN USING MAIN HOISTING GEAR

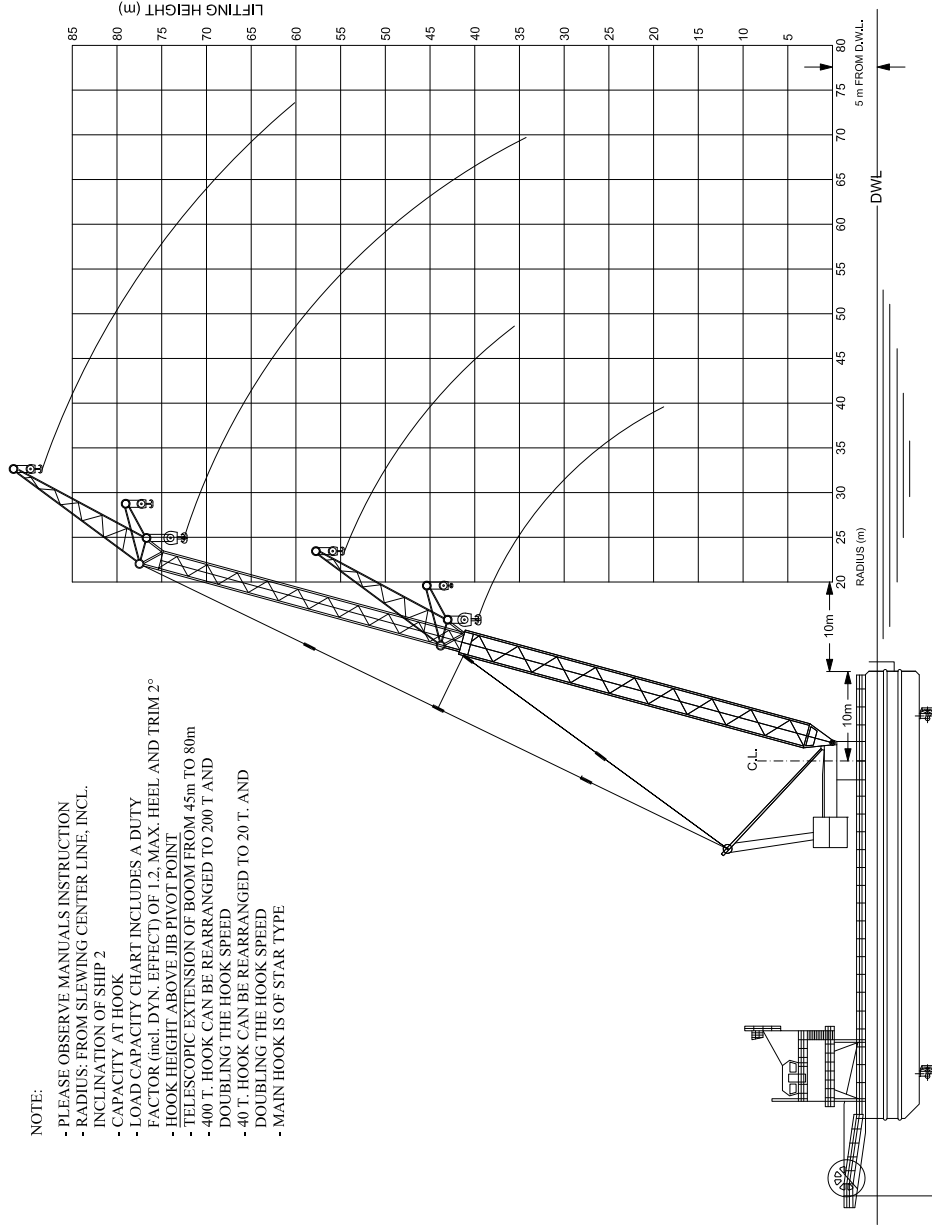
RADIUS m.	CAPACITY TONNIS	HOOK HEIGHT m.
25	200	72,45
26	198	72,15
28	195	71,49
30	192	70,77
32	188	69,99
34	184	69,15
36	180	68,25
38	175	67,27
40	170	66,23
42	165	65,12
46	156	62,65
50	145	59,84
54	133	56,63
58	121	52,97
62	110	48,76
66	100	43,85
70	90	38,00

LOAD CAPACITY WHEN USING AUXILIARY HOISTING GEAR

RADIUS m.	CAPACITY TONNIS	HOOK HEIGHT m.
33	40	89,54
34	40	89,20
36	40	88,47
38	40	87,69
40	40	86,86
42	40	85,98
44	40	85,04
46	40	84,04
48	40	82,99
50	40	81,87
55	40	78,80
56	39,5	78,13
60	37	75,28
64	34,5	72,10
68	32,5	68,55
72	30,5	64,57
73	30	63,50

NOTE:

- PLEASE OBSERVE MANUALS INSTRUCTION
- RADIUS: FROM SLEWING CENTER LINE, INCL. INCLINATION OF SHIP 2°
- CAPACITY AT HOOK
- LOAD CAPACITY CHART INCLUDES A DUTY FACTOR (incl. DYN. EFFECT) OF 1.2. MAX. HEEL AND TRIM 2°
- HOOK HEIGHT ABOVE JIB PIVOT POINT
- TELESCOPIC EXTENSION OF BOOM FROM 45m TO 80m
- 400 T. HOOK CAN BE REARRANGED TO 200 T. AND DOUBLING THE HOOK SPEED
- 40 T. HOOK CAN BE REARRANGED TO 20 T. AND DOUBLING THE HOOK SPEED
- MAIN HOOK IS OF STAR TYPE

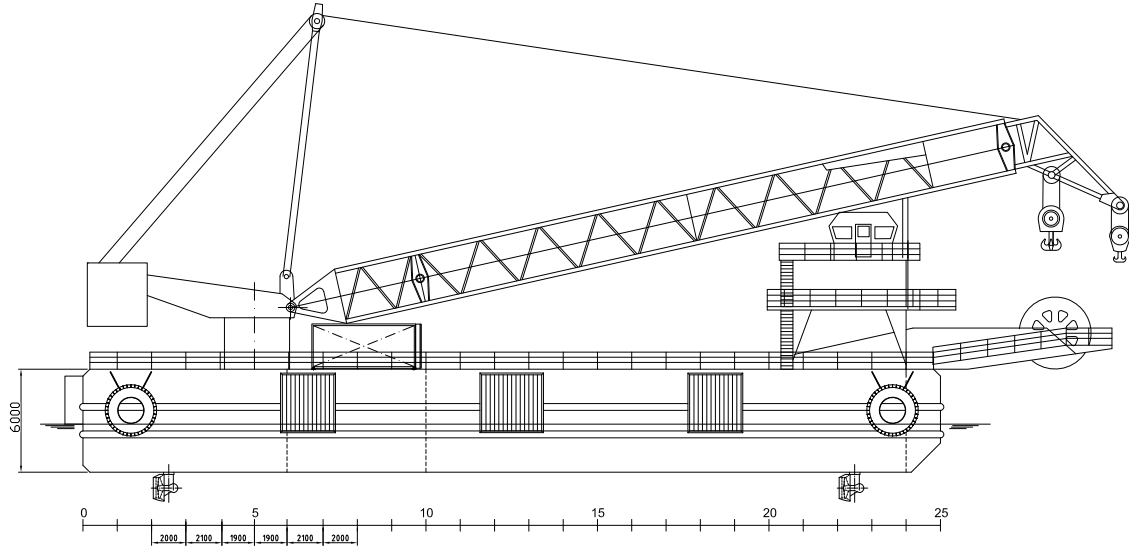


500 T.
S.W.L.

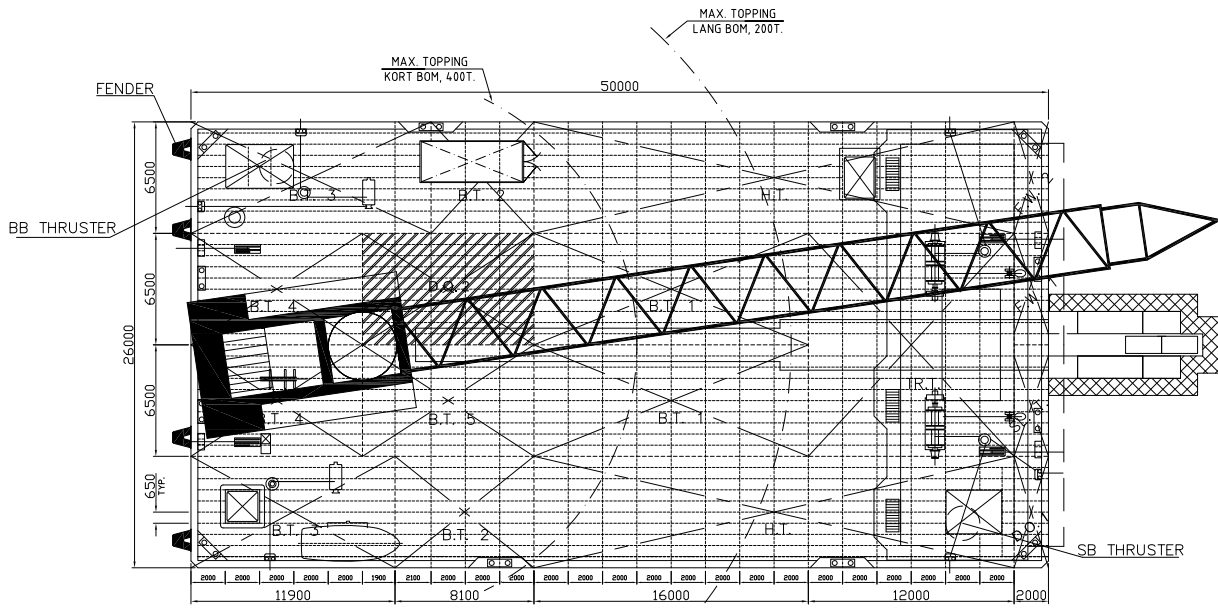
Rev.	Date	Description	Checked by	Appr.
0		TRONDS LIFT 6 - CAPACITIES FOR 400 T. REVOLVING CRANE.		
Project No. 278-101-04			Scale 1:200 (A1)	
Drawing and information believed to be correct, but not guaranteed.			TRONDS MARINE SERVICE AS	

* These specifications are given without guarantee and may be subject to change without notice.

TRONDS LIFT 6



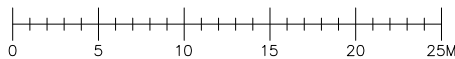
SIDE VIEW



TOP VIEW

TANK INFORMATION					
MARK	COMPARTMENT	EXTENSION	CAPACITY		
			m ³	p	tons
F.W. 1	FRESH WATER TANK No. 1 PORT	24-25	61,5	1,00	61,5
F.W. 2	FRESH WATER TANK No. 2 PORT	24-25	66,5	1,00	66,5
S.L.T.	SLOPE TANK	24-25	61,5		
D.O. 1	DIESEL OIL TANK No. 1	24-25	66,5	0,85	56,5
D.O. 2	DIESEL OIL TANK No. 2	5-10	382,0	0,85	324,7
T.B.T.	TWIN TANK	18-24	944,7	1,025	928,3
HT	HEELING TANK	10-24	767,1	1,025	756,3
HT	HEELING TANK	10-24	751,7	1,025	729,5
B.T. 1	BALLAST TANK No. 1	10-18	624,9	1,025	640,5
B.T. 1	BALLAST TANK No. 1	10-18	625,6	1,025	641,2
B.T. 2	BALLAST TANK No. 2	7-10	231,9	1,025	237,7
B.T. 2	BALLAST TANK No. 2	6-10	313,4	1,025	321,2
B.T. 3	BALLAST TANK No. 3	0-7	174,8	1,025	179,2
B.T. 3	BALLAST TANK No. 3	0-6	150,5	1,025	154,3
B.T. 4	BALLAST TANK No. 4	0-5	126,5	1,025	129,7
B.T. 4	BALLAST TANK No. 4	0-5	125,7	1,025	128,8
B.T. 5	BALLAST TANK No. 5	5-10	382,2	1,025	391,8

TABLE FROM DRW.:
218-230-01 Tankplan.pdf



LOA: 61,0m
BOA: 26,3m
Depth: 6,0m
Deck area for cargo: 676m²
Deck loading: 7,5 t/m²

1 11.06-17 UPDATED - Deck equipment		I.A.	
Rev.	Date	Made by	Disc. by
PROJECT: TRONDS LIFT 6		PROJECT NO.: 218	CUSTOMER: TRONDS MARINE SERVICE AS
FILE: TRONDS LIFT 6 GENERAL ARRANGEMENT		SCALE: 1:150 (A1)	DATE: 21/10/18
DRAWING NO.: 218-100-01		REV.: 1	
TRONDS MARINE SERVICE			

* These specifications are given without guarantee and may be subject to change without notice.