



FLOATING CRANE

TRONDS LIFT 8

CLASS BV PONTOON CRANE

SIGNAL HO 9232, IMO: 8757099

GRT 904

NRT 271

LIFT. CAP. 400 T

Dimensions *

Length o.a.	46,60 m
Beam o.a.	20,00 m
Draught	3,60 m
Air Draft Transit	Minimum 16 m
GRT	904
NRT	271

Machinery and Equipment *

Main Engines	Diesel electric
Auxiliaries	2 × Volvo D16KC (420 kW)
Propulsion	2 × Veth VSG-1200
Bow Thrusters	1 × Schottel SRP 150

Capacities *

Max. load main hooks with fly jib	400 T (2 × 200 T)
Max. load main hooks without fly jib	400 T (2 × 200 T)
Max. load jib hooks	250 T (2 × 125 T)
Max. load middle hook	100 T
Max. lifting height main hooks	29,7 m (from deck)
Max. lifting height jib hooks	49,2 m (from deck)

Contact details Project and Chartering

Asbjørn Sivertsen

Manager – Contract, Project and Chartering

Phone: +47 906 23 472

E-mail: asbjorn@trondsmarine.com

Aage Petter Fjelland

Manager – Project and Chartering

Phone: +47 928 06 120

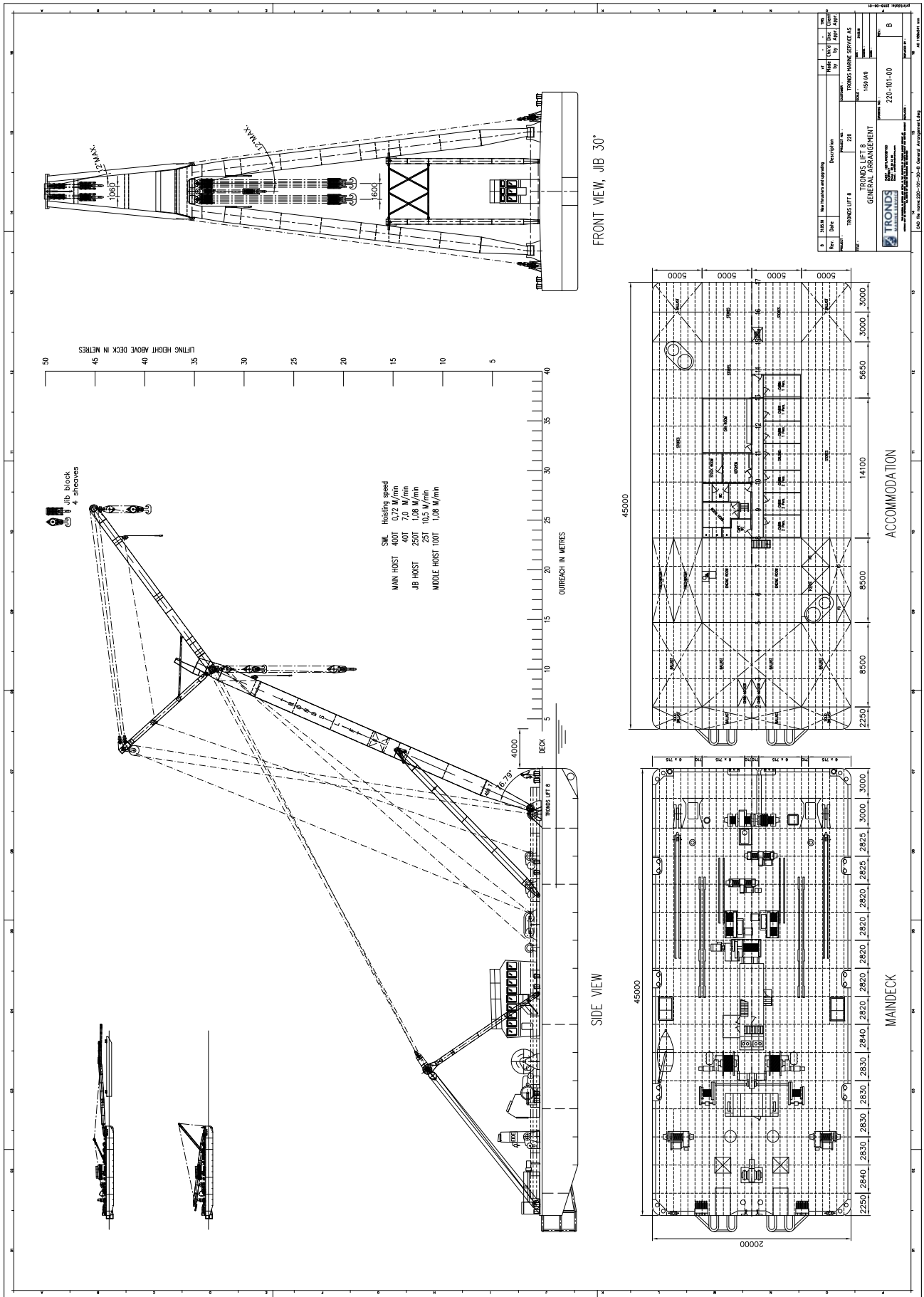
E-mail: aage.petter@trondsmarine.com

Steinar Eide

Manager – Project and Chartering

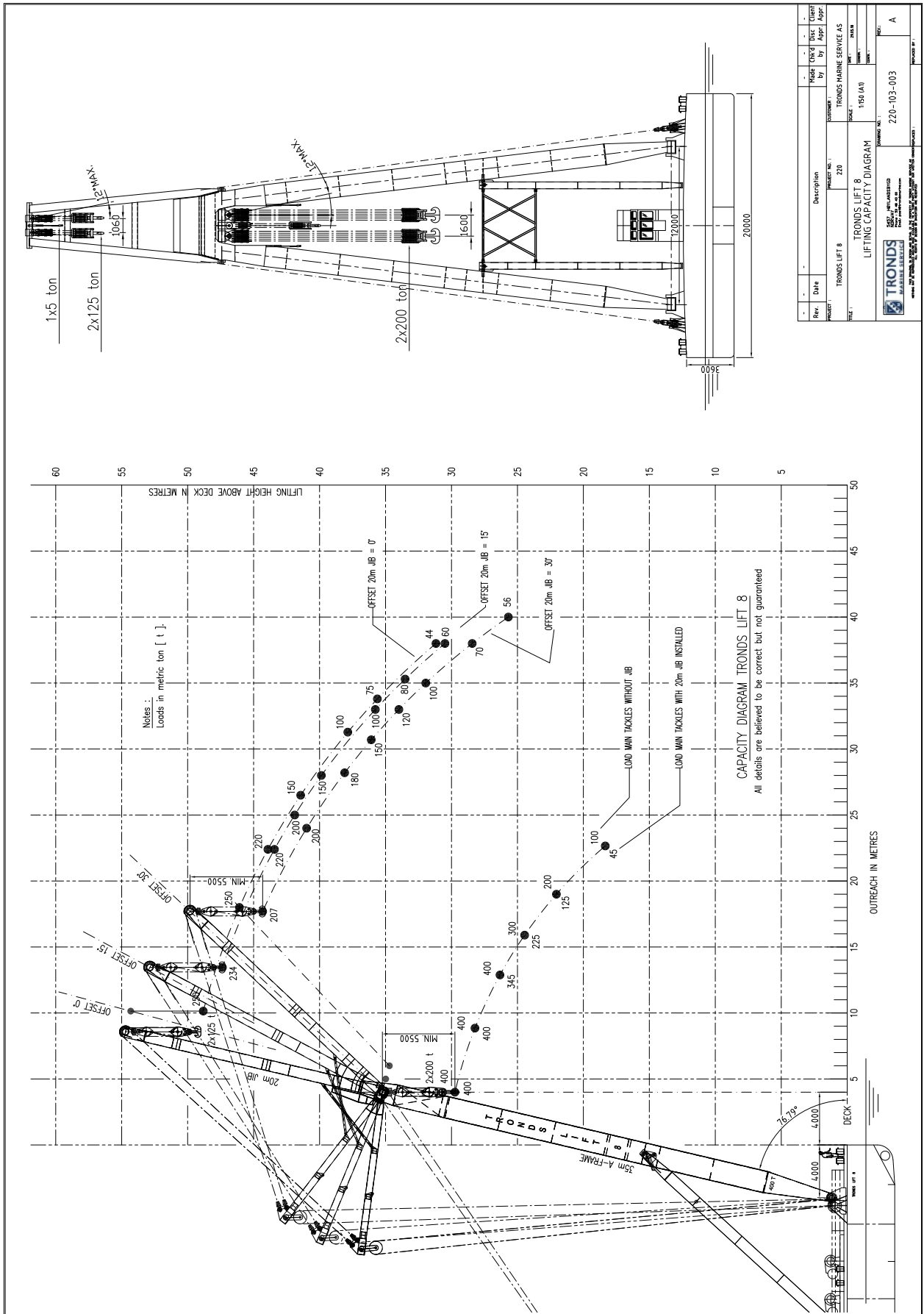
Phone: +47 971 29 666

E-mail: steinar@trondsmarine.com



* These specifications are given without guarantee and may be subject to change without notice.

TRONDS LIFT 8



* These specifications are given without guarantee and may be subject to change without notice.