



FLOATING CRANE  
**TRONDS LIFT**

**CLASS** DNV-GL. 1A1 R5 BARGE

**SIGNAL** JXOB, IMO: 863940

**GRT** 724

**NRT** 217

**LIFT. CAP.** 216 T

## Dimensions \*

Length o.a.	35,20 m
Beam o.a.	19,30 m
Draught	3,75 m
Air Draft Transit	Approx 24 m (without jib)
GRT	724
NRT	217

## Capacities \*

Max. load main hook with fly jib	200 T
Max. load main hook without fly jib	216 T
Max. load jib hook	40 T
Max. lifting height main hook	45,30 m (from deck)
Max. lifting height jib hook	60,40 m (from deck)

## Machinery and Equipment \*

Main Engines	2 × Cummins NTA 855
Auxiliaries	1 × Cummins NTA 855 1 × Scandia D995
Propulsion	2 × Schottel SRP 170
Bow Thrusters	1 × Schottel SRP 100

## Contact details Project and Chartering

### Asbjørn Sivertsen

*Manager – Contract, Project and Chartering*

Phone: +47 906 23 472

E-mail: asbjorn@trondsmarine.com

### Aage Petter Fjelland

*Manager – Project and Chartering*

Phone: +47 928 06 120

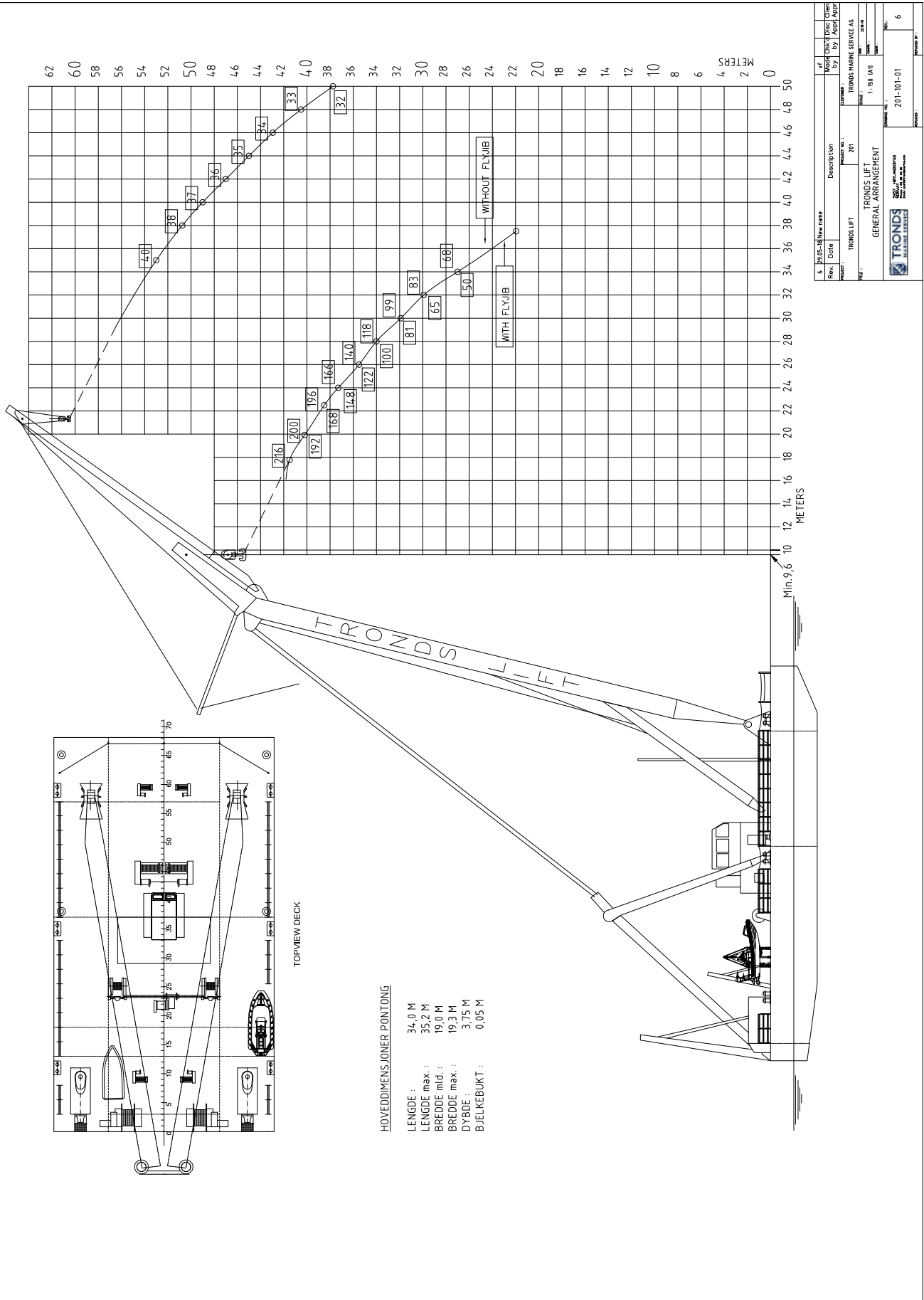
E-mail: aage.petter@trondsmarine.com

### Steinar Eide

*Manager – Project and Chartering*

Phone: +47 971 29 666

E-mail: steinar@trondsmarine.com



Rev.:	Date:	Description:	Model No.:	Scale:	Sheet No.:	Total No. of Sheets:
6	2005-08	TRONDS LIFT	201	1:50 (A1)	1	6
Model checked by: ASPI Drawn by: ASPI			TRONDS MARINE SERVICE AS TRONDS LIFT GENERAL ARRANGEMENT			
Model No.: 201-101-01 Project No.:			Scale: 1:50 (A1) Drawing No.: 201-101-01 Sheet No.: 6			
Model checked by: ASPI Drawn by: ASPI			TRONDS MARINE SERVICE AS TRONDS LIFT GENERAL ARRANGEMENT			