

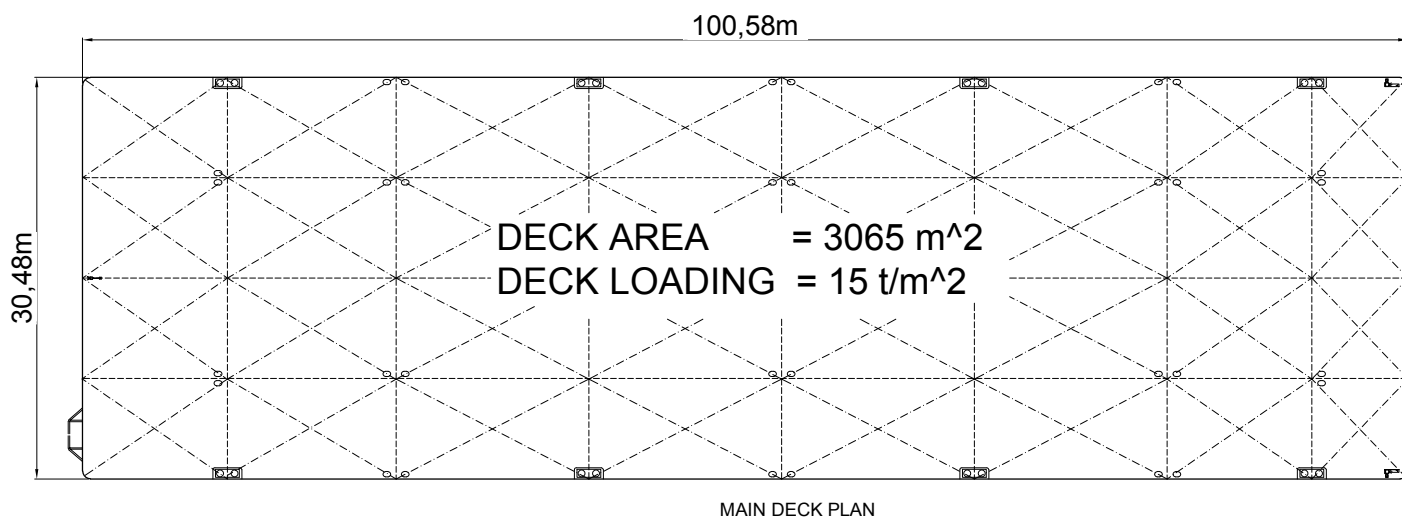
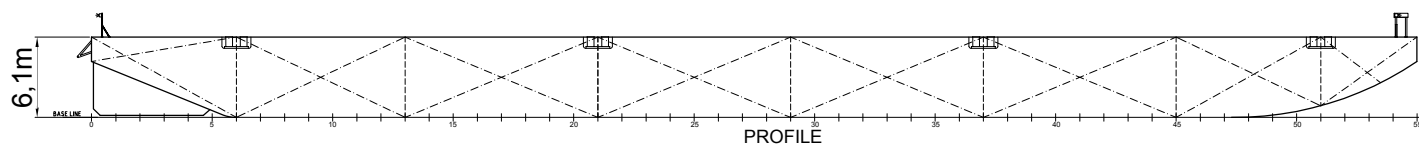


FLATTOP BARGE

TRONDS BARGE 45

BUILT CHINA, 2007
CLASS DNV-GL, 1A1 BARGE FOR DECK CARGO
SIGNAL LG2640
GRT 4969

TRONDS BARGE 45



Dimensions *

Length o.a.	100,584 m
Beam o.a.	30,48 m
Depth	6,10 m
Draft light	0,84 m
Draft loaded	4,73 m

Capacities *

DWT	11 475 mT
LW	2109 mT
Deck area	3065 m ²
Deck unit load	15 t/m ²

Arrangement and Equipment *

Bollards	8 double bollards
----------	-------------------

Contact details Project and Chartering

Asbjørn Sivertsen

Manager – Contract, Project and Chartering

Phone: +47 906 23 472

E-mail: asbjorn@trondsmarine.com

Aage Petter Fjelland

Manager – Project and Chartering

Phone: +47 928 06 120

E-mail: aage.petter@trondsmarine.com

Steinar Eide

Manager – Project and Chartering

Phone: +47 971 29 666

E-mail: steinar@trondsmarine.com

* These specifications are given without guarantee and may be subject to change without notice.