



CARGO BARGE

TRONDS BARGE 29

CLASS	BUREAU VERITAS
BUILT	NETHERLANDS, 1976
SIGNAL	LH2415
GRT	4168
NRT	1250

TRONDS BARGE 29

Dimensions *

LOA	91,44 m
BOA	27,43 m
Depth	6,10 m
Draft light	0,70 m
Draft loaded	4,40 m

Capacities *

DWT	9 085 mt
LW	1 624 mt
Deck loading area	1700 m ²
Deck loading cap	10 t/m ²

Arrangement and equipment *

Ballast tanks	20 pcs
Ballast pumps	2 × 450 m ³ /h Centrif.pump
Anchors	N/A
Mooring	2 × 15t Capistan, 1 × fdw and 1 × aft port side.
Bollards	20 double bollards
Diesel Generators	1 × 380V, 50Hz, 200kVA / 1 × 380V, 50Hz, 15kVA
Towing arrangement	3 × smit brackets Ø65 mm in bow and 2 × smit brackets Ø65 mm in stern. 2 × Chain bridle 27,5m Ø65 mm, Ø65 mm, 1 × steel wire 16,5m Ø44mm. Triplate D=50mm, shackles 5 pcs. 85t. Emergency tow wire 100 m, Ø76 mm

Contact details Project and Chartering

Asbjørn Sivertsen

Manager – Contract, Project and Chartering

Phone: +47 906 23 472

E-mail: asbjorn@trondsmarine.com

Aage Petter Fjelland

Manager – Project and Chartering

Phone: +47 928 06 120

E-mail: aage.petter@trondsmarine.com

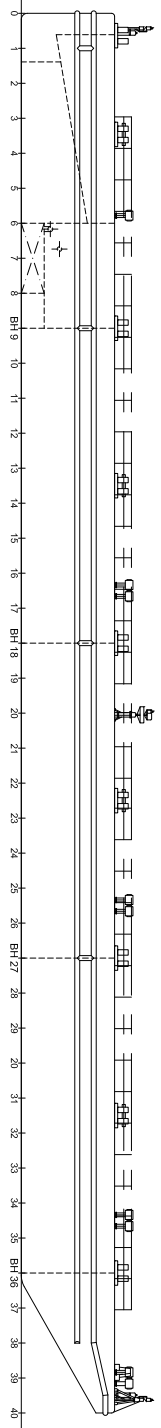
Steinar Eide

Manager – Project and Chartering

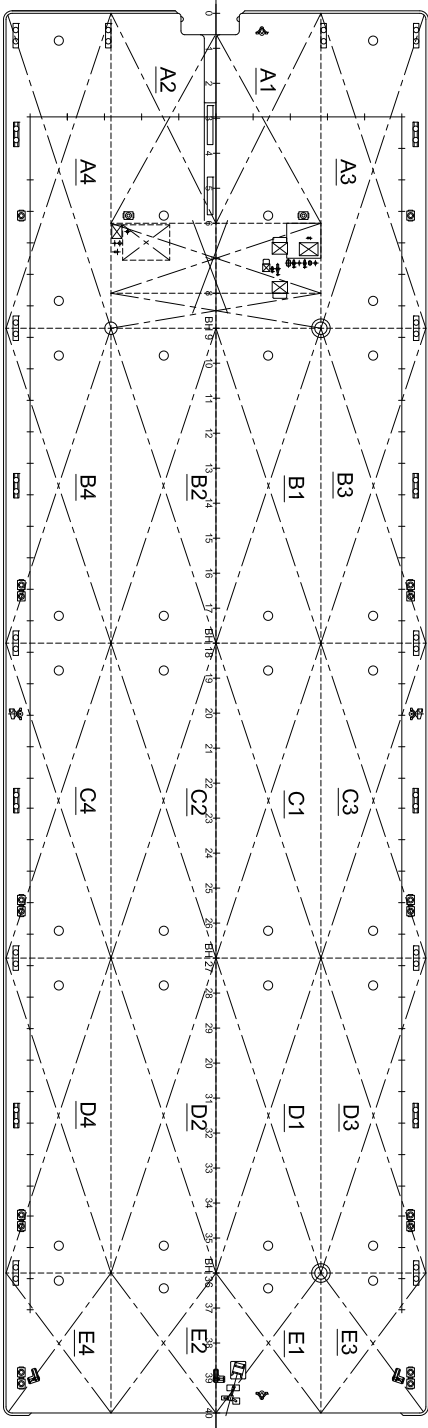
Phone: +47 971 29 666

E-mail: steinar@trondsmarine.com

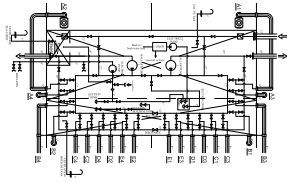
* These specifications are given without guarantee and may be subject to change without notice.



PROFILE VIEW



DECK VIEW



DETAIL PUMPROOM

LOA	51.440m
BOW	27.452m
DEPTH	6.090m
DEPTH AT BOW	10.502m
DEPTH AT STERN	5.665m
DEPTH AT MID	10.710m
BALANCE CAPACITY	14.000 tms

Rev	1	15-11-17	UPDATED - New Owner
Date			
Product	TRONDS BARGE 29		
Description	TRONDS MARINE SERVICE AS		
Project no.	141		
Scale	1:150 (A1)		
Project	1029 - General Arrangement		
Sheet	1		

TRONDS MARINE SERVICE AS
 1029 - General Arrangement

DRAWING BELONGS TO
GUARANTEED 141/15

* These specifications are given without guarantee and may be subject to change without notice.