

MULTI PURPOSE TUG

TRONDS LAX

CLASS	BUREAU VERITAS
LOA	31,10 M
BOA	9,50 M
MAX DRAFT	3,60–4,00 M
GRT	254

Machinery *

Main Engines	Mitsubishi 2 × 1250 kW each
Auxiliaries	2 × 71 kVa Mitsubishi, 1 × 410 kW Mitsubishi for hydraulics
Propulsion	Twin screw + Kort Nozzles – Van Voorden diameter 2,10 m
Bow Thrusters	330 kW (450 hp)
Rudders	4 fishtail rudders – 2 rudders behind each propeller with separate steering possibility

Performance *

Bollard pull	52 T
---------------------	------

Deck Equipment *

Anchor handling drum (brake / pull / wire dimension)	Stern roller, 2 × Hydraulic Towing Pins on each side, SWL 30 tons Karmøy Fork and Towing Pins in centre. Push Bow with rubber Fender of 90 cm diameter. Mampaey Towing Hook, hydraulic driven.
Towing drum (brake / pull / wire dimension)	Hydraulic towing winch with a pulling force of approx. 40 ton, holding force 60 ton, 2 drums on with 700 m of 38 mm steel wire – one with 400 m 38 mm steel wire.
Deck crane	Heila crane type HLRM 200 mt – 4 SL max 9 tons @ 16,31m. Remote controlled
Free deck space	120 m ² with 10", 20" and 40" feet container fittings, reefer plugs available

Contact details Project and Chartering

Asbjørn Sivertsen

Manager – Contract, Project and Chartering

Phone: +47 906 23 472

E-mail: asbjorn@trondsmarine.com

Aage Petter Fjelland

Manager – Project and Chartering

Phone: +47 928 06 120

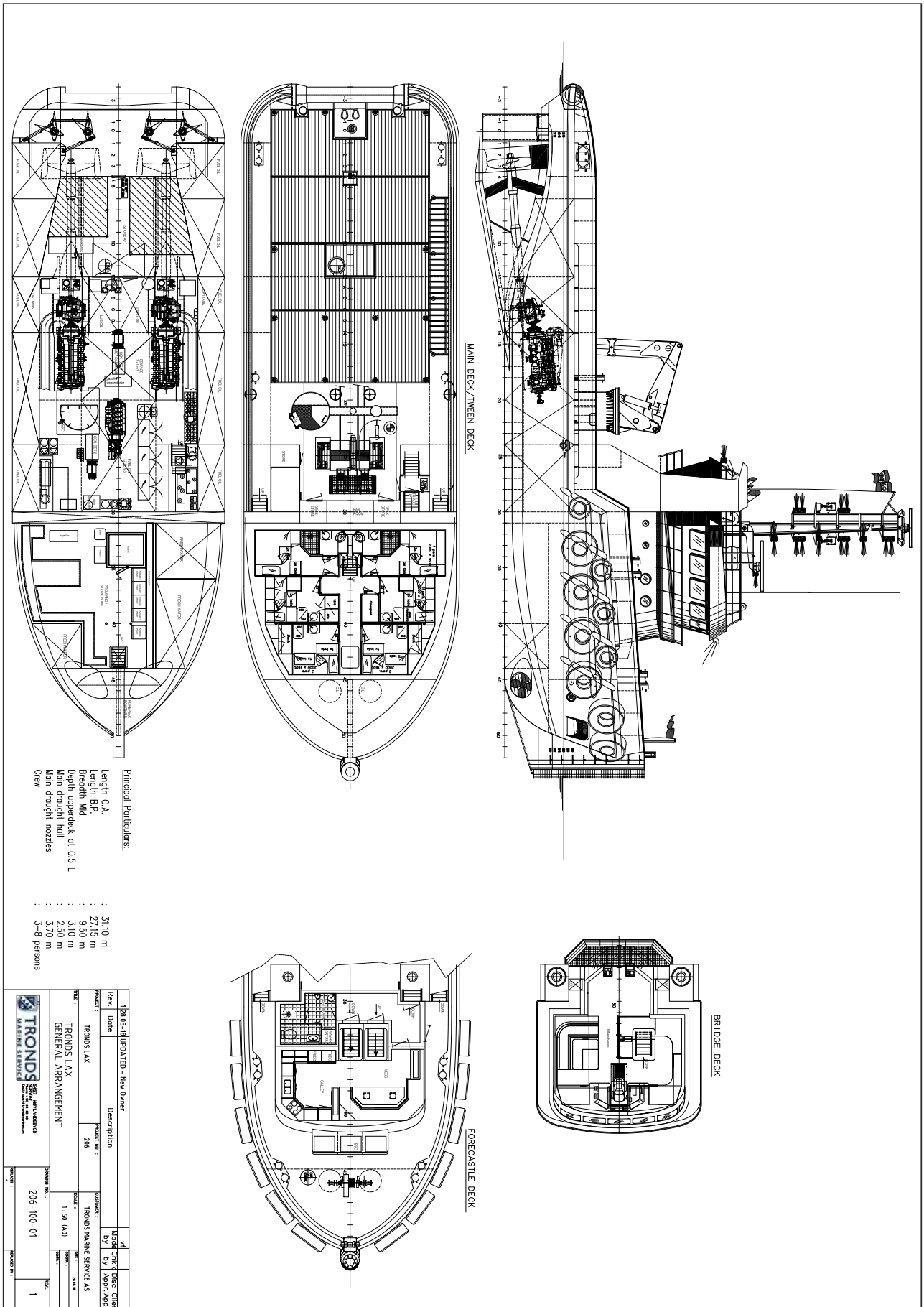
E-mail: aage.petter@trondsmarine.com

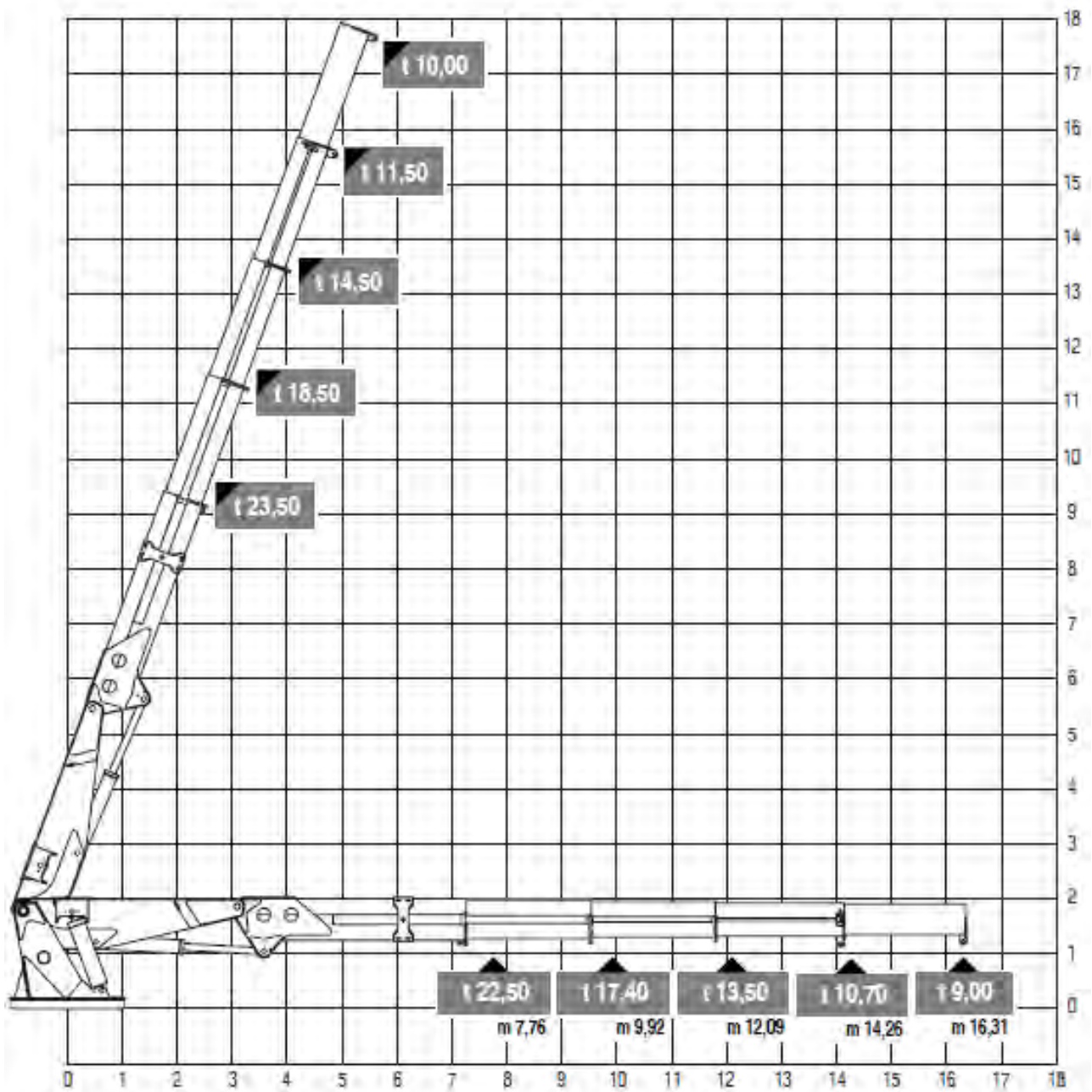
Steinar Eide

Manager – Project and Chartering

Phone: +47 971 29 666

E-mail: steinar@trondsmarine.com





858.137.09

TRONDS LAX



* These specifications are given without guarantee and may be subject to change without notice.