



MULTICAT

TRONDS FLEX

- LENGTH O.A.: 27.70M | BEAM O.A: 11.50M | DRAUGHT: 2.85M
- 34T BOLLARD PULL
- 2X HS MARINE AKC290/27 HE6 3T @ 27M / 0.8T @ 32M
- 1X SPERRE 15K SUBFIGHTER WITH 1000M TEDDER CABLE, EQUIPPED WITH UPAP TRANSPONDER.
- 1X ANCHOR HANDLING WINCH WITH CAPACITY 100T@ 3M/MIN PULLING FORCE 1ST LAYER, 150T BRAKE HOLDING FORCE 1ST LAYER 2X 1000M WIRE CAPACITY, DIA 65MM POLYPROPYLENE WIRE

Deck lay-out *

Anchor	2x 300 kg Pool TW (HHP)
Anchor winch	1x Hydraulically driven, Kraaijeveld DECK
Cranes	1x HS Marine AKC290/27 HE6 3T @ 27m 1x HS Marine AKC290/27 HE6 3T @ 27m extended 800kg @ 34m
Anchor handling winch	1x single drum
Capacities	50 ton@ 10m/min pulling force 1st layer 100-ton brake holding force 1st layer
Tugger winches	2 x 12 tonns Dromec-winch 1 x 10 tonns Adria-winch 1 x 5 tonns Adria-winch
Wire capacity	2 x 1000 m, diameter 65mm, polypropylene wire
Towing pins front	1x WK double pin type with chain stopper
Towing pins stern	1x Karmfork unit, towing pins with double chain stoppers
Mooring lock	15T Safework
Rov	1x Sperre 15K Subfighter with 1000 meters tedder cable, equipped with µPap transponder

General *

Yard number	571725 (Damen Shipyards Hardinxveld)
Delivery date	15 th April 2016
Basic functios	Anchor handling, dredger service, supply, towing, hose handling and survey
Classification	Bureau Veritas I + Hull • MACH Tug, Anchor handling vessel, Unrestricted navigation, • AUT- UMS
Flag	Norway

Accommodation *

Comfortable heated and air-conditioned accommodation for 7 persons in 5 cabins, galley, sanitary facilities, etc.
Two double cabins and three single cabins.

Contact details Project and Chartering

Asbjørn Sivertsen

Manager – Contract, Project and Chartering

Phone: +47 906 23 472

E-mail: asbjorn@trondsmarine.com

Aage Petter Fjelland

Manager – Project and Chartering

Phone: +47 928 06 120

E-mail: aage.petter@trondsmarine.com

Steinar Eide

Manager – Project and Chartering

Phone: +47 971 29 666

E-mail: steinar@trondsmarine.com

Tank Capacities (approx.)*

Fuel oil	109.5 m3
Fresh water	31.4 m3
Dirty oil	1.5 m3
Sewage	10.5 m3
Sludge	1.3 m3
Hydr oil	2.2 m3
lub oil	1.7 m3
Bilge water	4.0 m3
Fw tanks	51.8 m3

Dimensions (approx.) *

Length o.a	27.70 m
Beam o.a	11.50 m
Length load line	23.90 m
Depth at sides	3.90 m
Draught (98% conditions)	± 2.85 m
Displayment light ship	479.674 ton(m)
Gross tonnage	296 GT

Propulsion system *

Main engines	2x Cat C32 TTAACERT
Total power	1790 bkW at 1800 rpm
Gearboxes	12x Reintjes WAF 572L 7,091 : 1
Propulsion	2x fixed pitch propellers in Optima nozzles, 1900 mm
Bowthruster	Kalkman Beta 250H, 200pk / 184kW Hydraulic driven

Preformances (approx.) *

Bollard pull (avrage)	34.0 ton(m)
Speed economical	8.5 knots
Speed max	10.0 knots

Contact details Project and Chartering

Asbjørn Sivertsen

Manager – Contract, Project and Chartering

Phone: +47 906 23 472

E-mail: asbjorn@trondsmarine.com

Aage Petter Fjelland

Manager – Project and Chartering

Phone: +47 928 06 120

E-mail: aage.petter@trondsmarine.com

Steinar Eide

Manager – Project and Chartering

Phone: +47 971 29 666

E-mail: steinar@trondsmarine.com

* These specifications are given without guarantee
and may be subject to change without notice.

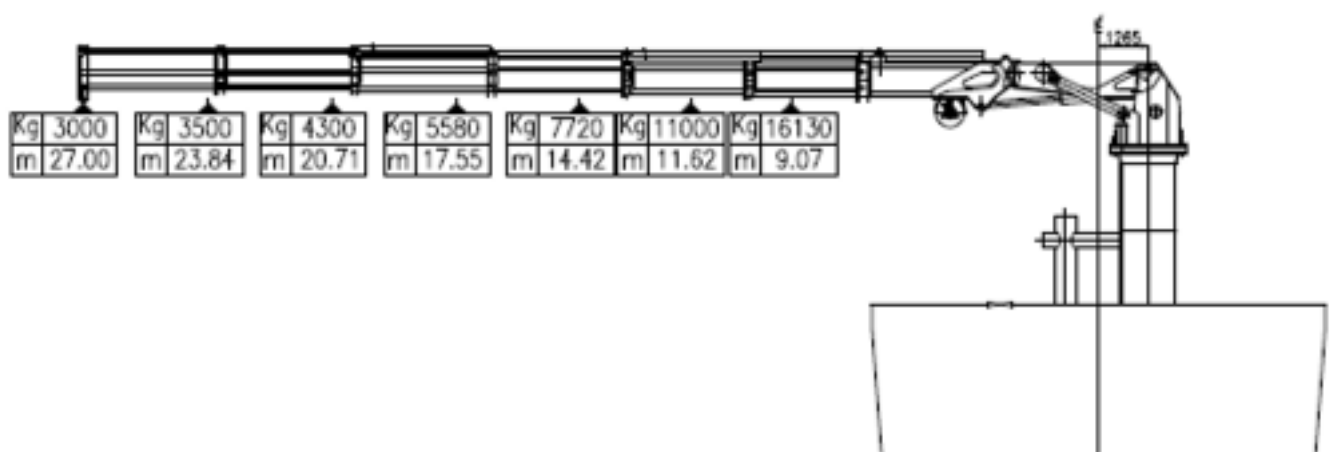
CRANE CONDITIONS AFT

Crane aft ship:

Type crane:	HS Marine AKC 290/27 HE6
Lifting capacity (Kg):	Outreach (mtr):
16130	9.07
11000	11.62
7720	14.42
5580	17.55
4300	20.71
3500	23.84
3000	27.00

Regulations during crane operations:

- Maximum heeling angle with crane load: 10 degrees
- Maximum freeboard at low side: 200mm



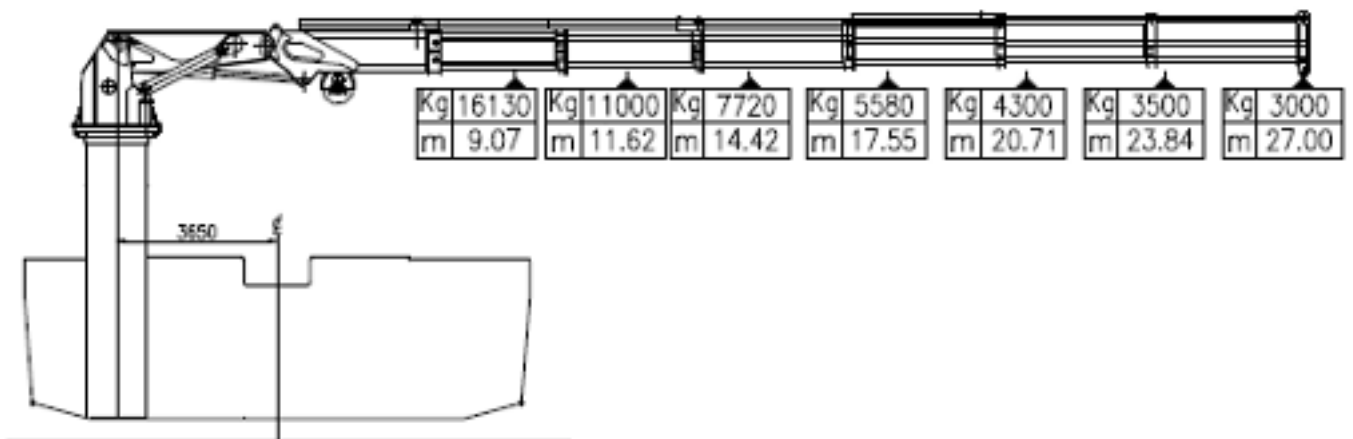
CRANE CONDITIONS FORE

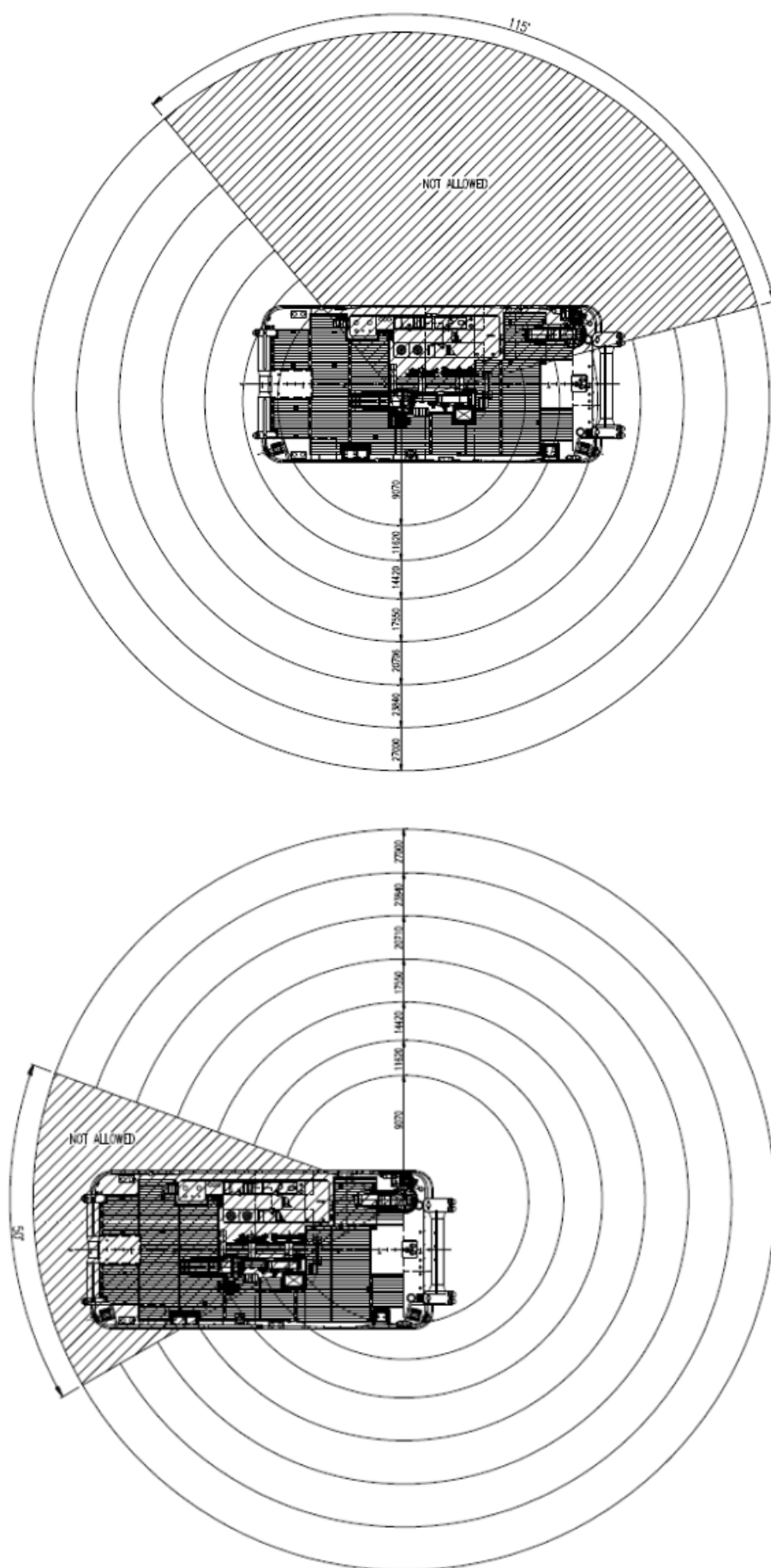
Crane fore ship:

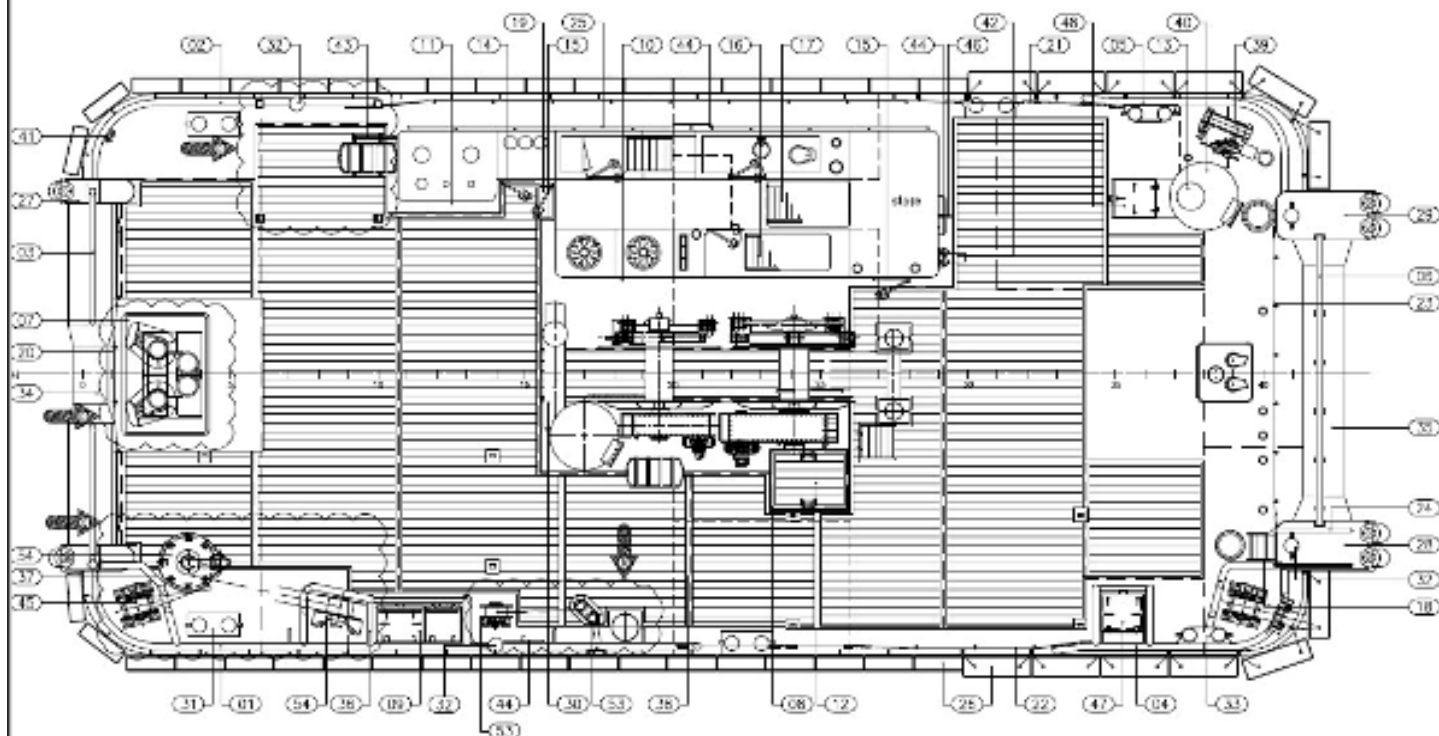
Type crane:	HS Marine AKC 290/27 HE6
Lifting capacity (Kg):	Outreach (mtr):
16130	9.07
11000	11.62
7720	14.42
5580	17.55
4300	20.71
3500	23.84
3000	27.00

Regulations during crane operations:

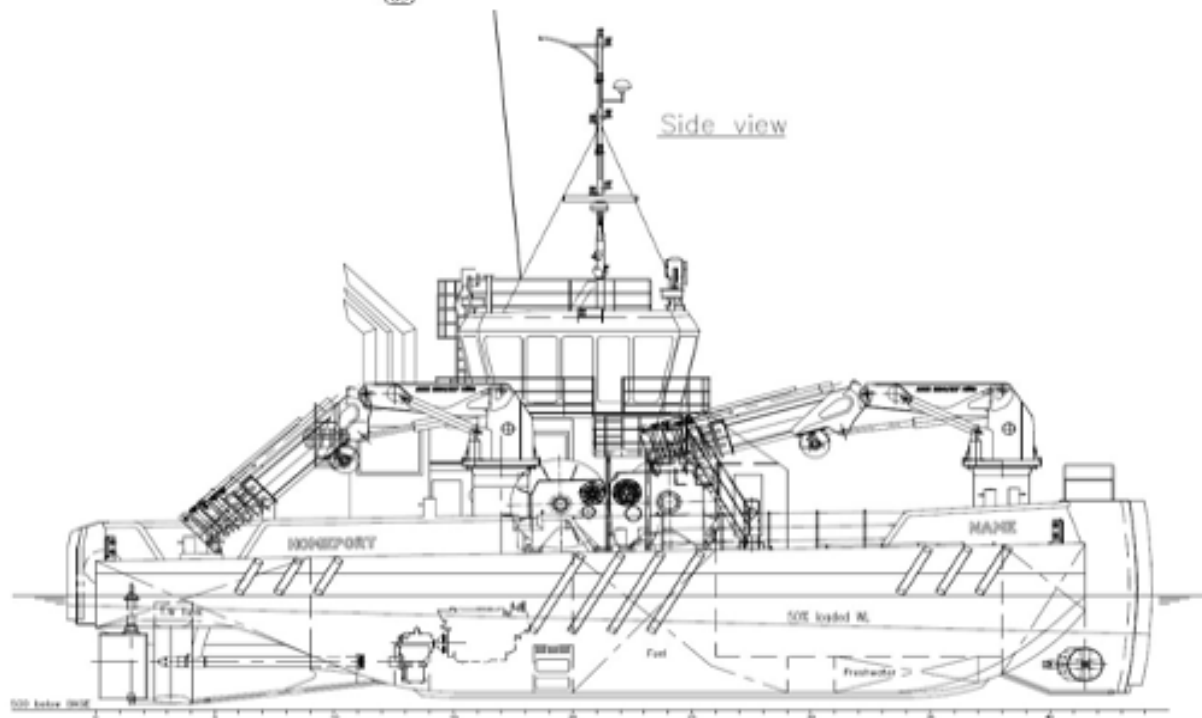
- Maximum heeling angle with crane load: 10 degrees
- Maximum freeboard at low side: 200mm



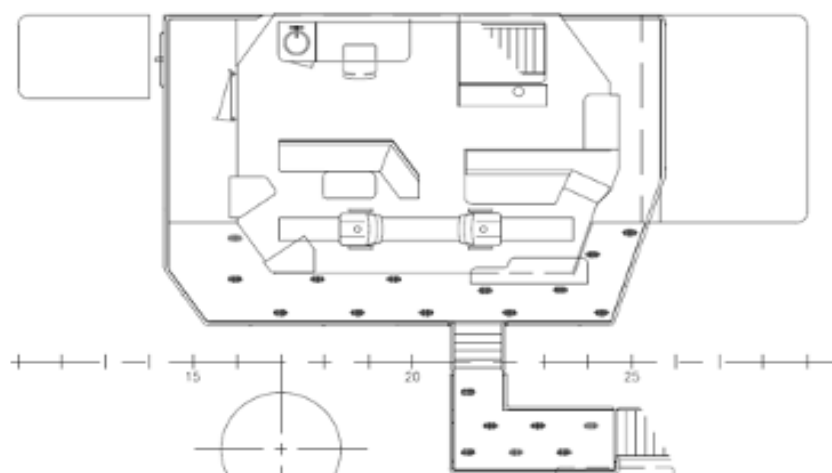
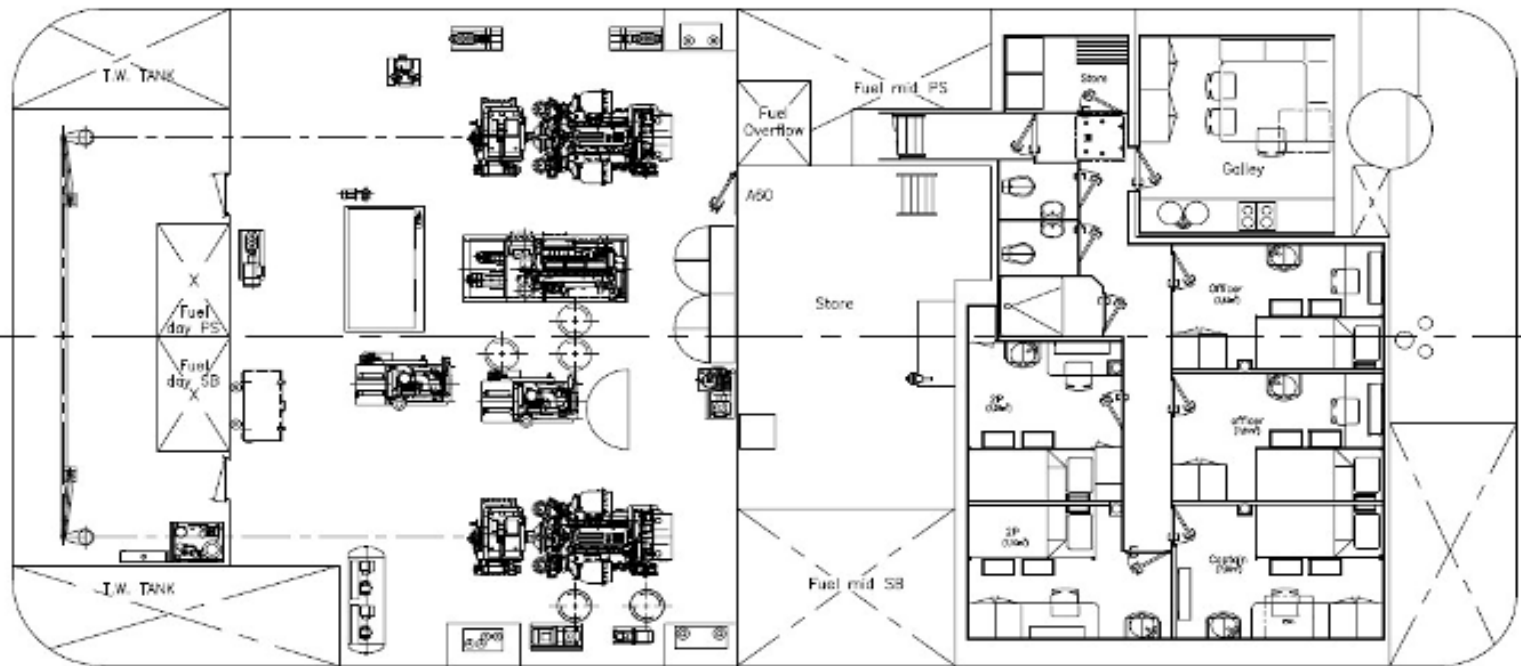




Side view



BELOW MAIN DECK



TRONDS FLEX

